

NITRA pneumatic plug fitting. For use with push-to-connect fittings. Five fittings per package.

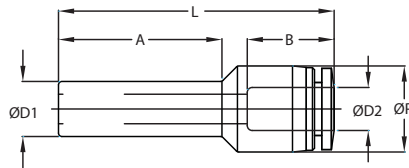


Inch/Metric Fitting

NITRA™ Plug								
Inch Sizes - dimensions in inches (in.)								
Part No.	Price	Size	$\varnothing D$	$\varnothing P$	L	A	Package Weight (lbs)	Qty. per pack
PLUG532	<--->	5/32 in. [4mm]	5/32	5/32	1.18	0.71	0.1	5
PLUG14	<--->	1/4 in.	1/4	1/4	1.34	0.79	0.1	5
PLUG38	<--->	3/8 in.	3/8	3/8	1.65	0.98	0.1	5
PLUG12	<--->	1/2 in.	1/2	1/2	1.81	1.10	0.1	5
Metric Sizes - dimensions in millimeters (mm)								
PLUG6M	<--->	6 mm	6	6	34.0	20.0	0.1	5
PLUG8M	<--->	8 mm	8	8	38.0	22.0	0.1	5
PLUG10M	<--->	10 mm	10	10	42.0	25.0	0.1	5
PLUG12M	<--->	12 mm	12	12	46.0	28.0	0.1	5



Inch Fitting



NITRA pneumatic plug-in to push-to-connect reducer fitting with thermoplastic (PBT) body and stainless steel tube gripping claws. For use with polyurethane or nylon tubing. Five fittings per package.



Metric Fitting

NITRA™ Plug-In Reducer											
Inch Sizes - dimensions in inches (in.)											
Part No.	Price	Size	$\varnothing D1$	$\varnothing D2$	$\varnothing P$	L	A	B	Orifice	Package Weight (lbs)	Qty. per pack
PR14-532	<--->	1/4 in. x 5/32 in.	1/4	5/32	0.41	1.59	0.89	0.59	0.13	0.1	5
PR38-14	<--->	3/8 in. x 1/4 in.	3/8	1/4	0.51	1.89	1.23	0.66	0.22	0.1	5
PR12-38	<--->	1/2 in. x 3/8 in.	1/2	3/8	0.69	2.04	1.20	0.79	0.31	0.1	5
Metric Sizes - dimensions in millimeters (mm)											
PR6M-4M	<--->	6 mm x 4 mm	6	4	10.5	37.8	21.7	14.9	3.0	0.1	5
PR8M-6M	<--->	8 mm x 6 mm	8	6	12.5	40.0	23.7	16.4	4.8	0.1	5
PR10M-8M	<--->	10 mm x 8 mm	10	8	14.8	46.8	27.6	18.7	6.8	0.1	5
PR12M-10M	<--->	12 mm x 10 mm	12	10	17.5	50.8	31.2	20.1	8.0	0.1	5