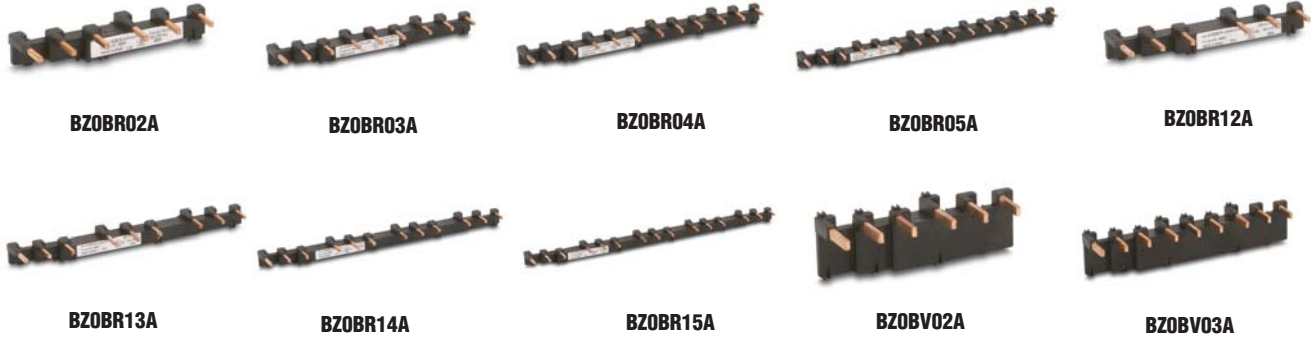
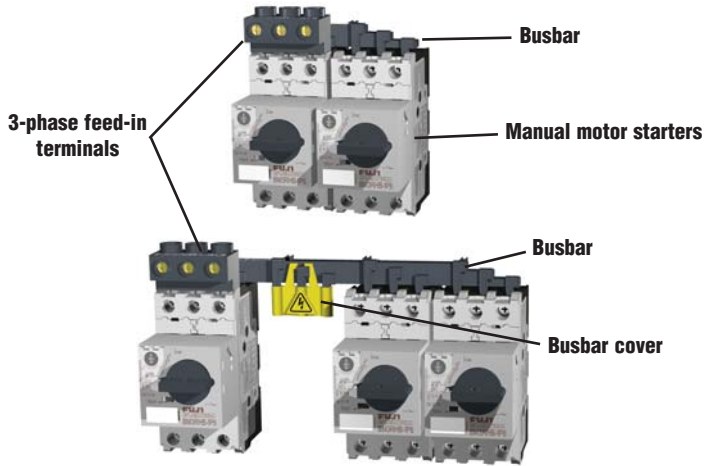


# Fuji Duo Series Manual Motor Starters Accessories

## Busbar system

### Features

- The busbar system reduces wiring time and saves floor space.
- The busbar makes it easy to power from 2 to 5 manual motor starters, with no wiring needed.
- The 3-phase feed-in terminals are used to connect the wire for the power supply circuit.
- The busbar cover guards against accidental touching of nonconnected busbar terminals (charged parts).



Note: Busbar photos continued on next page.



BZ0BFRA



BZ0BFVA



BZ0BCRA



BZ0BCVA

Busbar System Components and Ratings						
Part Number	Price	Description	Used with	Specifications	Weight (g)	
BZ0BR02A	<-->	Busbar	BM3R	Continuous current: 64A max. pin connection	2-BM3R, modular space: 45mm	30
BZ0BR03A	<-->				3-BM3R, modular space: 45mm	50
BZ0BR04A	<-->				4-BM3R, modular space: 45mm	70
BZ0BR05A	<-->				5-BM3R, modular space: 45mm	90
BZ0BR12A	<-->				2-BM3R, modular space: 54mm	30
BZ0BR13A	<-->		BM3R+ 1 external accessory, 9mm wide	3-BM3R, modular space: 54mm	55	
BZ0BR14A	<-->			4-BM3R, modular space: 54mm	80	
BZ0BR15A	<-->			5-BM3R, modular space: 54mm	105	
BZ0BV02A	<-->		BM3V	Continuous current: 126A max. pin connection	2-BM3V, modular space: 55mm	140
BZ0BV03A	<-->				3-BM3V, modular space: 55mm	240
BZ0BV04A	<-->				4-BM3V, modular space: 55mm	340
BZ0BV12A	<-->				BM3V + 1 external accessory, 9mm wide	2-BM3V, modular space: 64mm
BZ0BV13A	<-->		3-BM3V, modular space: 64mm	270		
BZ0BV14A	<-->		4-BM3V, modular space: 64mm	380		
BZ0BFRA	<-->		3-phase feed-in terminal	BM3R	Continuous current: 64A max. Applicable cable size: 25mm <sup>2</sup> max.	40
BZ0BFVA	<-->	BM3V		Continuous current: 126A max. Applicable cable size: 50mm <sup>2</sup> max.	170	
BZ0BCRA	<-->	Busbar cover	BZ0BR	For pin connection NOTE: Some fine tuning and fitting adjustments may be needed.	10	
BZ0BCVA	<-->		BZ0BV		5	

# Fuji Duo Series Manual Motor Starters Accessories

## Busbar system (continued)



**BZ0BV04A**

**BZ0BV12A**

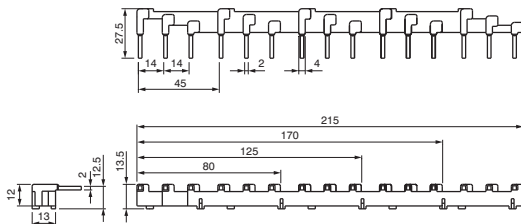
**BZ0BV13A**

**BZ0BV14A**

### Dimensions (mm)

For BM3RHB-xxx

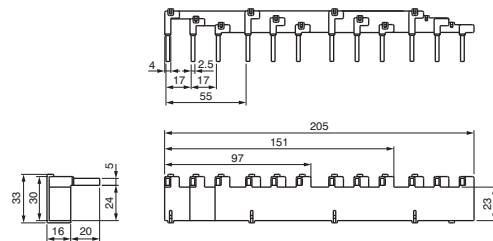
**BZ0BR0xx Without external accessory**



BZ0BR02A: 80 mm  
BZ0BR03A: 125 mm  
BZ0BR04A: 170 mm  
BZ0BR05A: 215 mm

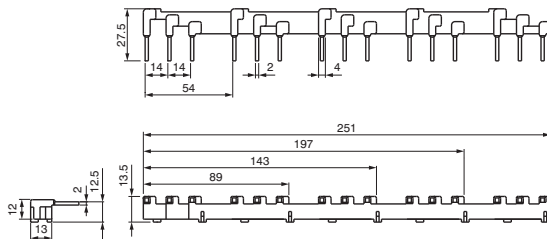
For BM3VHB-xxx

**BZ0BV0xx Without external accessory**



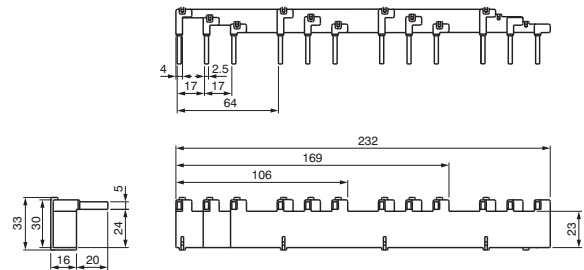
BZ0BV02A: 97 mm  
BZ0BV03A: 151 mm  
BZ0BV04A: 205 mm

**BZ0BR1xx With 1 external accessory**



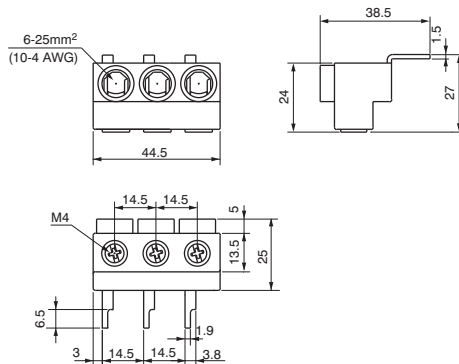
BZ0BR12A: 89 mm  
BZ0BR13A: 143mm  
BZ0BR14A: 197 mm  
BZ0BR15A: 251 mm

**BZ0BV1xx With 1 external accessory, 9mm wide**



BZ0BV12A: 106 mm  
BZ0BV13A: 169 mm  
BZ0BV14A: 232 mm

**BZ0BFRA 3-phase feed-in terminals**



**BZ0BFVA**

