

# AC POWER ADAPTER INSTALLATION P/N EA-AC

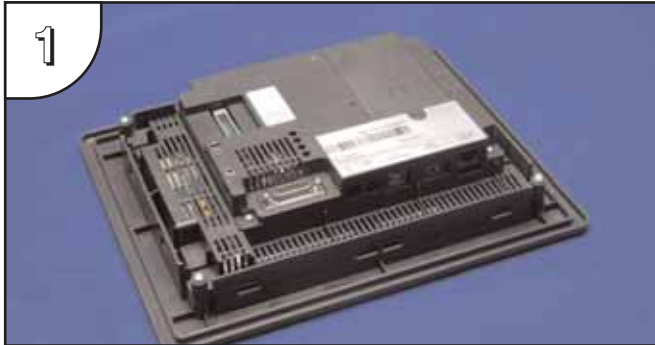


**WARNING:** This procedure should only be performed by qualified personnel who are experienced in working with electronic equipment. Take the necessary steps to prevent damage that may be caused by static electricity discharge. Disconnect input power to the touch panel before proceeding.

**WARNING:** The AC Power Adapter is not recommended for use with the EA7-T15C touch panel when operating temperatures are expected to exceed 40 °C [104 °F].



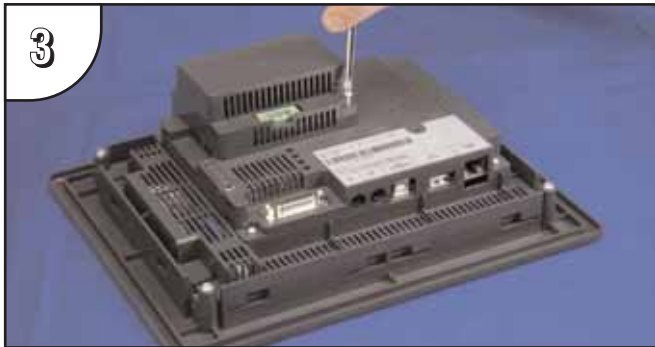
**NOTE:** THE AC POWER ADAPTER, P/N EA-AC, IS RATED TO ACCEPT AN INPUT VOLTAGE OF 100-240 VAC, 50/60 HERTZ AND HAS AN OUTPUT VOLTAGE OF 24 VDC @ 1.5 A. PLEASE READ THE WARNING ON THE REAR OF THIS DATA SHEET IN REGARD TO ELECTRICAL WIRING AND SAFETY. PRODUCT DIMENSIONS AND OVERALL DEPTH OF THE VARIOUS TOUCH PANELS WITH THE AC ADAPTER INSTALLED ARE ALSO SHOWN ON THE REAR OF THIS DATA SHEET.



**1**  
**Preparation:** Place the touch panel face down on a lint-free soft surface to prevent scratching the display screen if not already installed in a control cabinet. Remove the DC power connector if it is installed.



**2**  
Insert the AC Power Adapter into the touch panel's 5-position DC power connector.



**3**  
Secure the AC Power Adapter to the touch panel by tightening the two (2) spring loaded captive M3-20 screws to a torque of 50 oz-in [0.35 Nm].



**4**  
Plug the wired 3-pin AC Power Connector into its mating connector on the AC Adapter and secure in place by tightening the two (2) captive M2.5 screws to a torque of 70 oz-in [0.5 Nm]. (Wiring details on back of sheet.)

01737-824600

www.lamonde.com

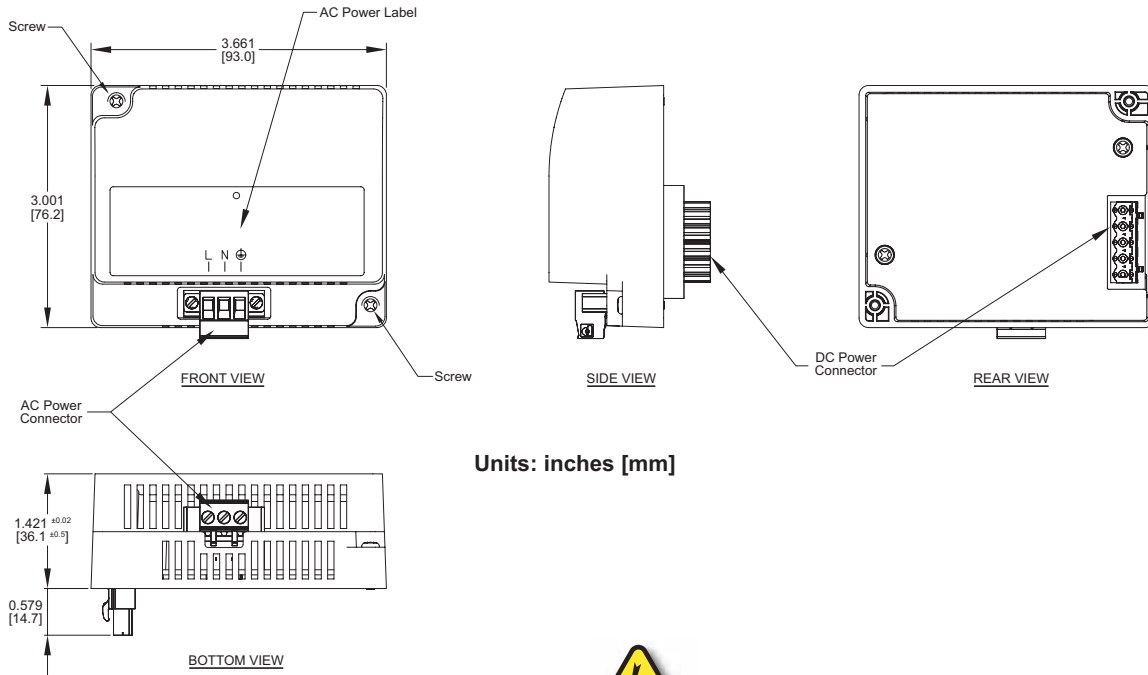
## AC Power Adapter Specifications

|  |   |  |  |
|--|---|--|--|
| <b>Part Number</b>                         | EA-AC   | <b>Static Electricity Discharge Resistance</b> | Compliant with IEC61000-4-2, Contact: 4 kV, Air: 8 kV  |
| <b>Input Voltage &amp; Frequency</b>       | 100-240 VAC; 50/60 Hertz  | <b>Agency Approvals</b>                        | UL508, cUL, CE, EMC EN61132-2  |
| <b>Voltage Range</b>                       | 85-264 VAC w/ Under Voltage and Over Voltage Shutdown   | <b>Environment</b>                             | No corrosive gas or conductive dust  |
| <b>Permissible Momentary Power Failure</b> | Within 40 ms, see explanation in Note below.  | <b>Grounding</b>                               | Ground resistance: less than 100 ohm   |
| <b>Input Power</b>                         | 68 VA or less   | <b>Dimensions - inches [mm]</b>                | 3.00" (H) x 3.66" (W) x 1.42" (D) [76.2 mm x 93.0 mm x 36.1 mm] (Excluding DC Power Connector.)            |
| <b>Operating Temperature Range</b>         | 0 °C to 50 °C [32 to 122 °F] (For the EA7-T15C touch panel, maximum temperature is 40° C, [104 °F] for the power adapter, see Warning above.) | <b>Weight</b>                                  | 6.13 oz. [175 g]   |
| <b>Storage Temperature Range</b>           | -20 to 60 °C [-4 to 140 °F]   | <b>Cooling Method</b>                          | Natural convection when installed on vertically mounted touch panel.                                       |
| <b>Operating &amp; Storage Humidity</b>    | 10-85% RH (non-condensing)  | <b>Included Parts</b>                          | Insert (This sheet), AC Power Connector  |
| <b>Noise Immunity</b>                      | 1000 VAC p-p (Pulse width 1 µs, rise time: 1 ns) With proper ground connection on AC terminal block.  | <b>Removable AC Power Connector</b>            | EA-AC-CON or DECA Switchlab MC101-508-03G Secure with (2) captive M2.5 screws, torque to 70 oz-in [0.5 Nm] |
| <b>Hi-Pot</b>                              | 1000 VAC, 1 minute With proper ground connection on AC terminal block.  | <b>Output Voltage and Ripple</b>               | 21.6 - 26.4 VDC, Ripple < 100 mV p-p   |
| <b>Insulation Resistance</b>               | 500 VDC, 10 M ohm or above With proper ground connection on AC terminal block.  | <b>Output Current</b>                          | Maximum 1.5 A  |
| <b>Vibration</b>                           | Compliant with IEC61131-2   | <b>Inrush Current</b>                          | For 100 VAC: 15 A, 3 ms or less<br>For 240 VAC: 20 A, 3 ms or less   |
| <b>Shock</b>                               | Pulse shape: Sine half wave, Peak acceleration: 147 m/s <sup>2</sup> (15 G), X, Y, Z: 3 directions, 2 times each                              | <b>Power Fail Detection Voltage</b>            | 58 VAC ±5%   |
| <b>Thermal Protection</b>                  | 140 °C [284 °F], with autorecovery  | <b>Mounting to Touch Panel</b>                 | Secure with (2) spring loaded captive M3-20 screws, torque to 50 oz-in [0.35 Nm]                           |
| <b>Short Circuit Protection</b>            | 85 VAC: 2.6 A, 100 VAC: 2.8 A, 264 VAC: 3.9 A   |  |  |



**NOTE:** PERMISSIBLE MOMENTARY POWER FAILURE: THE C-MORE TOUCH PANEL WILL TURN OFF THE LCD BACKLIGHT INSTANTLY WHEN THE POWER FAILURE IS DETECTED (LESS THAN 58 VAC +/- 5%) FOR EXTENDING THE POWER RETENTION PERIOD THAT ENABLES THE CPU TO RUN LONGER. THE BACKLIGHT TURNS ON AUTOMATICALLY WHEN THE POWER RETURNS TO THE C-MORE OPERATING VOLTAGE.

# AC Power Adapter Dimensions:



Units: inches [mm]



## WARNING

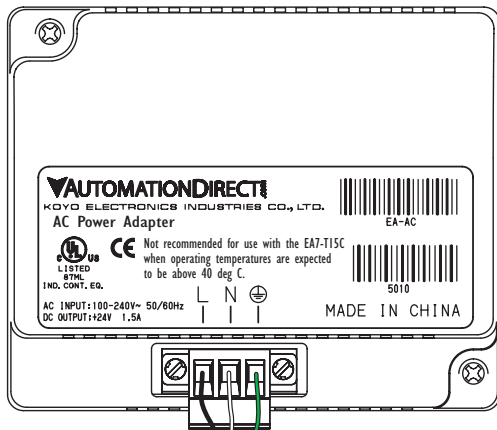
To minimize the risk of potential safety problems, you should follow all applicable local and national codes that regulate the installation and operation of your equipment. These codes vary from area to area and it is your responsibility to determine which codes should be followed, and to verify that the equipment, installation, and operation are in compliance with the latest revision of these codes.

*Equipment damage or serious injury to personnel can result from the failure to follow all applicable codes and standards. We do not guarantee the products described in this publication are suitable for your particular application, nor do we assume any responsibility for your product design, installation, or operation.*

If you have any questions concerning the installation or operation of this equipment, or if you need additional information, please call us at 770-844-4200.

This publication is based on information that was available at the time it was printed. At *Automationdirect.com*® we constantly strive to improve our products and services, so we reserve the right to make changes to the products and/or publications at any time without notice and without obligation. This publication may also discuss features that may not be available in certain revisions of the product.

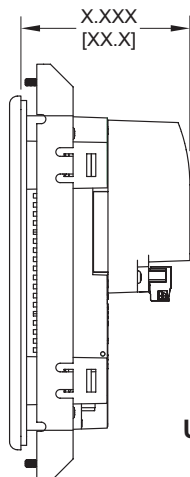
# AC Power Adapter Wiring:



100 - 240 VAC  
50/60 Hz



# Panel Depth with AC Power Adapter Installed:



- EA7-S6M-R = 2.921 [74.2]
- EA7-S6C-R = 2.921 [74.2]
- EA7-S6M = 2.921 [74.2]
- EA7-S6C = 2.921 [74.2]
- EA7-T6C = 2.921 [74.2]
- EA7-T8C = 3.157 [80.2]
- EA7-T10C = 3.106 [78.9]
- EA7-T12C = 3.102 [78.8]
- EA7-T15C = 3.075 [78.1]

Units: inches[mm]

Data Sheet: EA-AC-DS, Rev. B



E A - A C