

# DL06 - For Communication-Enabled Applications

Check out the top five reasons the DL06 is great for communication-enabled applications:

## 1 The most flexible communications ports in its class

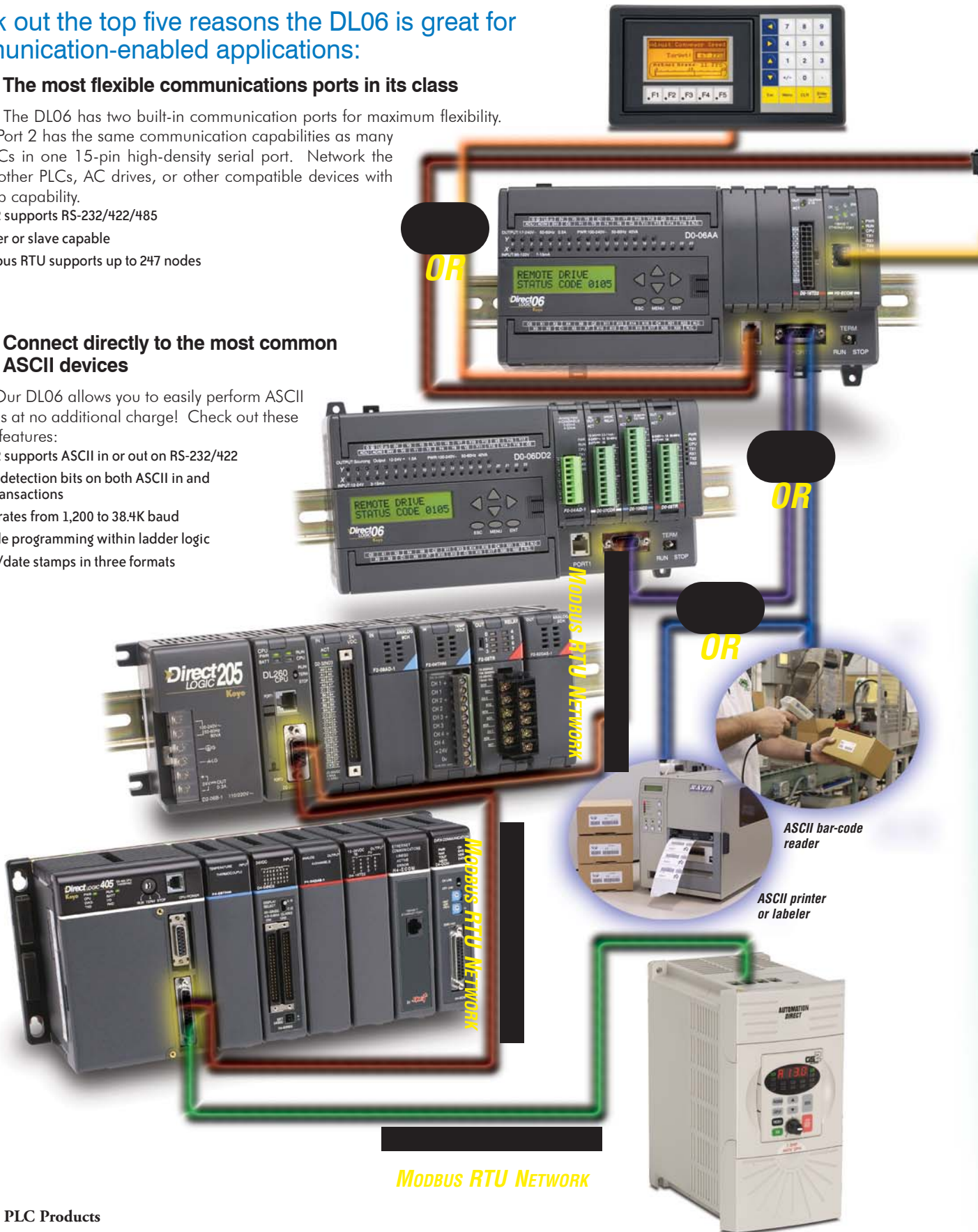
The DL06 has two built-in communication ports for maximum flexibility. Port 2 has the same communication capabilities as many larger PLCs in one 15-pin high-density serial port. Network the DL06 to other PLCs, AC drives, or other compatible devices with multi-drop capability.

- Port 2 supports RS-232/422/485
- Master or slave capable
- Modbus RTU supports up to 247 nodes

## 2 Connect directly to the most common ASCII devices

Our DL06 allows you to easily perform ASCII operations at no additional charge! Check out these powerful features:

- Port 2 supports ASCII in or out on RS-232/422
- Error detection bits on both ASCII in and out transactions
- Data rates from 1,200 to 38.4K baud
- Simple programming within ladder logic
- Time/date stamps in three formats



### 3 Programming port can also be used for operator interface

Port 1 on the DL06 is most often used for programming, but can also be used for an operator interface. After your programming is complete, use this port for one of our **C-more** panels as a low cost operator interface solution. You can leave Port 2 available for networking or other device control. The DL06 is programmable over Ethernet.

### 4 Ethernet connectivity to PLCs and HMI/SCADA systems

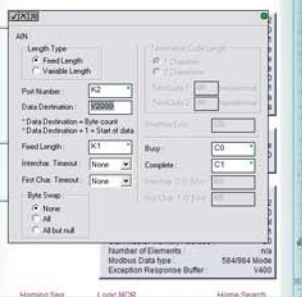
The H0-ECOM Ethernet Communications Modules provide a 10 Mbit or 100 Mbit Ethernet link for PLC systems and can be used for peer-to-peer PLC communication between two or more **DirectLOGIC** DL05/06 PLCs. They also provide data serving to HMI/SCADA and information systems using OPC over Ethernet. The H0-ECOM can accept a standard IP address and subnet mask to be used in conjunction with standard routers and switches.

### 5 Fill-in-the-blank instructions for ASCII and Modbus

The DL06 includes some cool communication instructions for ASCII operations and Modbus. Using **DirectSOFT** version 4.0 or higher, you can implement your communication requirements more easily than ever.

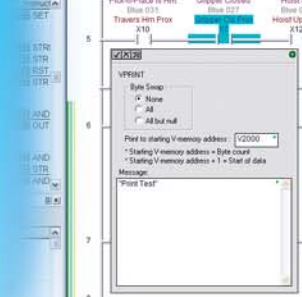


### Check out some of these examples:



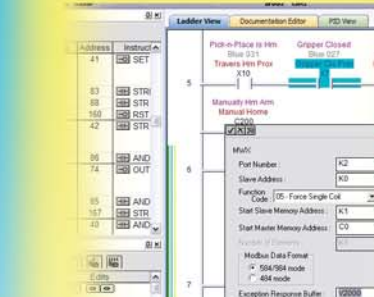
### ASCII input made easy for text or numeric data

The DL06 supports several ASCII input capabilities on its Port 2 serial port, including raw ASCII strings and embedded ASCII via a supported protocol (Modbus, **DirectNET**, K-Sequence) from an external HMI or similar master. Interface your ASCII devices, like barcode readers, weigh scales, or embedded controllers to the DL06 using our simple 'AIN' instruction.



### ASCII output for printers, labelers or any compatible serial interface

The DL06 also supports several ASCII output capabilities from its Port 2 serial port, including printing text strings, embedding memory register values in text strings, even time/date stamps in American, European and Asian formats. Add almost any compatible serial device to receive ASCII from the DL06, using our simple PRINT and VPRINT instructions.



### Modbus RTU specific instructions

The DL06 also includes our Modbus instructions to allow the PLC to speak the industry standard Modbus RTU "language" of its connected device. Enter native Modbus addresses into your ladder program. No more calculating address conversions from **DirectLOGIC** V-memory addresses — just point, click, and enter your desired Modbus register number.