

DL06 - Great Fit For Flexible Analog Control

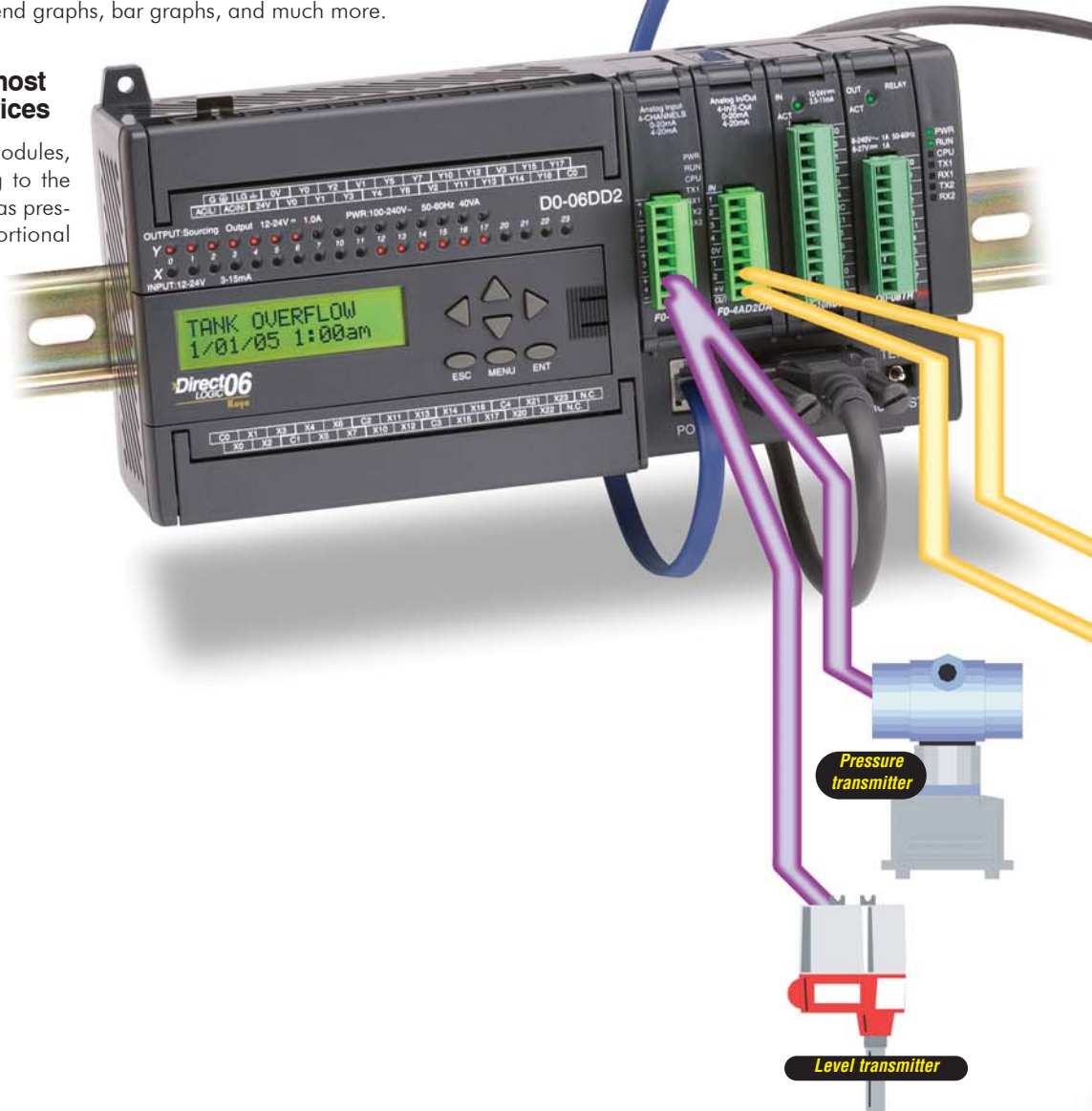
Top six reasons to use the DL06 for analog control:

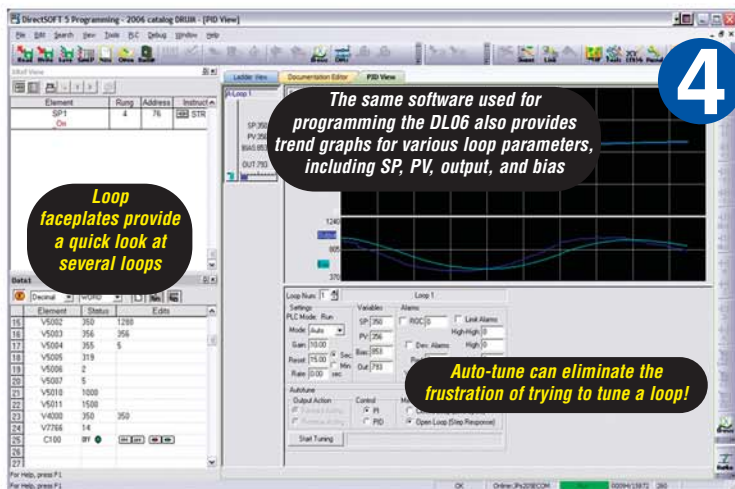
1 Two-for-one pricing
Combine our analog I/O modules with any DL06 for the lowest-cost analog control in its class. You can buy two DL06 systems, with any one of our analog modules, for the price of one of our competitors' systems. Check out the chart at the bottom of this page to compare.

2 C-more panels offer a low-cost window into your application
Our C-more panels have some of the best features in the market for process HMI applications. Key features include a Factory Symbol Library, PID faceplates, recipe download objects, meters, trend graphs, bar graphs, and much more.

3 Direct wiring to the most common analog devices
With the analog option modules, the DL06 offers direct wiring to the most common analog devices such as pressure and level transmitters, proportional valves, AC drives, panel meters, etc.

- 4-20 mA, 0-20 mA, input and output ranges
- 0-5 V and 0-10 V input and output ranges
- All ranges jumper selectable





4

Eight PID loops with “auto-tune”

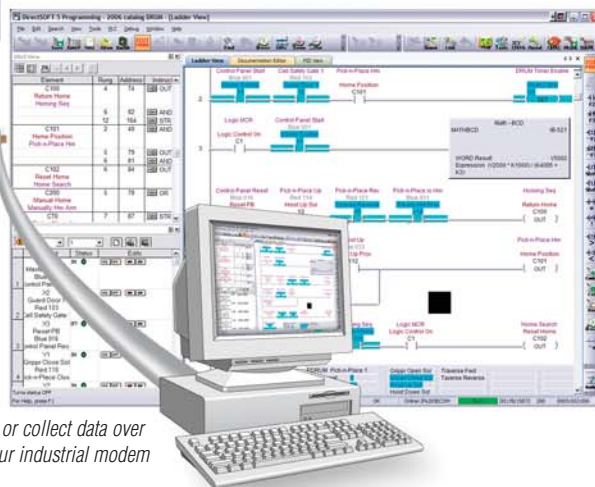
The DL06 supports its great analog capabilities with PID and floating point math at no additional charge. It also features:

- Automatic loop scheduling
- Charts to fill out for alarms and ramp/soak profiles
- **DirectSOFT** programming software includes the loop tune screen with trending (as shown)
- Auto-tune feature allows CPU to determine the near-optimum loop settings (based upon the time constant of your process at the time auto-tune procedure is performed)

Loop faceplates provide a quick look at several loops

The same software used for programming the DL06 also provides trend graphs for various loop parameters, including SP, PV, output, and bias

Auto-tune can eliminate the frustration of trying to tune a loop!



Program, troubleshoot, or collect data over the telephone line via our industrial modem



Industrial DIN rail mount premium telephone modem (MDM-TEL)

5

Powerful built-in and expansion communication

Combine a DL06 AC or DC-powered unit with our industrial telephone modem and avoid the high cost of an advanced Remote Telemetry System (RTU) that probably has a PLC as its brain anyway. The DL06, with its configurable Port 2 timing settings, easily accommodates our industrial telephone modem for almost any remote dial-up application like pump stations, level control and monitoring and even golf course irrigation. This combination can really save you money on service calls, data acquisition, up-and-down-time trending and more. And if you need additional ports, check out the new DO-DCM module.



Analog panel meter

6

Our analog modules do not disappoint

These little analog modules are the smallest and lowest-priced in the industry. There are seven models to choose from, with flexible features, including 4-20 mA or 0-20 mA, and 0-5V or 0-10V input and output ranges. All ranges are jumper selectable and include removable terminal blocks.



AC Drive



Module Check

- F0-04AD-1 4-ch. mA in
- F0-04AD-2 4-ch. voltage in
- F0-2AD2DA-2 2-ch. in/2-ch. volt out
- F0-4AD2DA-1 4-ch. in/2-ch. mA out
- F0-4AD2DA-2 4-ch. in/2-ch. volt out
- F0-04RTD 4-ch. RTD in
- F0-04THM 4-ch. thermocouple in

PLC Overview

DL05/06 PLC

DL105 PLC

DL205 PLC

DL305 PLC

DL405 PLC

Field I/O

Software

C-more HMIs

Other HMI

AC Drives

Motors

Steppers/Servos

Motor Controls

Proximity Sensors

Photo Sensors

Limit Switches

Encoders

Pushbuttons/Lights

Process

Relays/Timers

Comm.

TB's & Wiring

Power

Enclosures

Appendix

Part Index