

DL05 Expands To Support Analog

Top six reasons to choose a DL05 micro PLC for analog control

What is it?

The DL05's analog capabilities are a great fit for a variety of applications at a fraction of the competition's price. Install one of our analog option modules and wire directly to the most common analog devices, such as pressure and level transmitters, proportional valves, AC drives and panel meters.

What's it got?

- Four PID loops with auto-tune
- A large selection of Analog option modules
- Signal ranges of 4-20 mA or 0-20 mA, and 0-5 V or 0-10 V input and output ranges available
- Thermocouple and RTD temperature inputs
- Removable terminal blocks available on all modules

What type of analog control can I perform with it?

- Build a micro process controller using the PID loops combined with one of the new analog option modules. Add a local operator interface to set and view parameters.
- Monitor and control the level of a remote tank, well, or pumping station by combining a DL05 with our industrial telephone modem.
- Create a Modbus RUT network of several DL05 PLCs, each with an analog option module, for a low cost distributed control system. Even incorporate a PC HMI on the same SCADA network for a complete SCADA system.

1 Really low prices

Combine a 4-channel analog input module with our DL05 PLC for low-cost analog monitoring. Use the built-in PID loops and build a micro process control system at an unbeatable price. The DL05 matches or beats the competition in features, then finishes them off with two-for-one pricing. And if you want to do a little analog control, use a combo 2-channel in/2-channel out analog module.



2 Practical built-in connectivity

With two RS-232 serial communication ports included, this little PLC is no silent black box. Connect an operator interface on Port 1, then connect Port 2 to a PC-HMI or other serial device for data acquisition or operator control at the same time. Supports industry standard Modbus RTU protocol (both master and slave on Port 2 up to 38.4K baud)

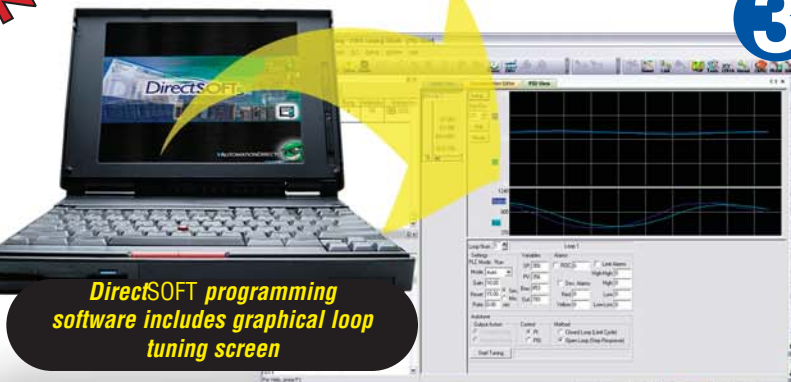


CHECK OUT OUR SPECS

| PLCs | DirectLOGIC DL05 | VS | Allen-Bradley MicroLogix 1000 | GE Fanuc VersaMax Micro | Siemens S7-222 |
|--|------------------|----|-------------------------------|-------------------------|----------------|
| Removable Terminal Block | Yes | | No | Yes | Yes |
| Number of Inputs | 8 | | 6 | 8 | 8 |
| Number of Outputs | 6 | | 4 | 6 | 6 |
| Total Program/Data Memory | 6K | | 1K | 6K | 6K |
| Communication Ports | 2 | | 1 | 1 | 1 |
| Master/Slave Protocols | Yes | | Slave only | Slave only | Yes |
| Real Time Clock and Memory Cartridge Options | Yes | | No | No | Yes |
| PID | Yes | | No | Yes | Yes |
| DeviceNet Slave Option Card | Yes | | Yes | No | No |
| Auxiliary DC Power Supply | No | | Yes | Yes | Yes |

Allen-Bradley Micrologix 1000 Installation Instructions Manual 176151. Allen-Bradley Micrologix 1000 User Manual 176163. GE Fanuc Series VersaMax Nano & Micro Controller Solutions GFA-196 50M 2/00. Siemens Simatic S7-200 Programmable Controller System Manual IC79000-G7076-C233-02 Edition:2

NEW! PC-DS100 - Free programming software includes all of the full package features like graphical PID loop trending.



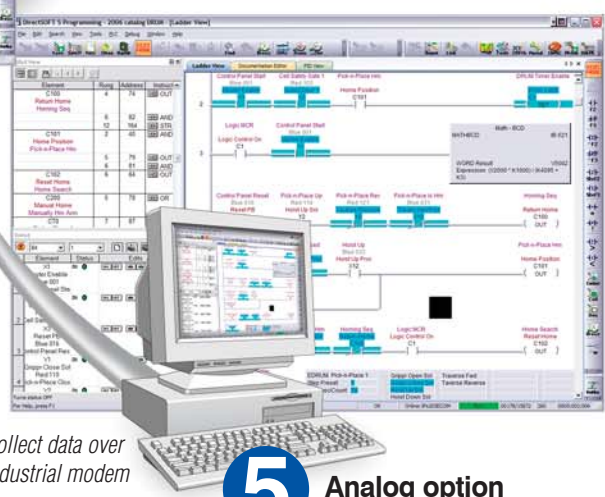
DirectSOFT programming software includes graphical loop tuning screen

3 The DL05 complements its great analog capabilities with four PID loops included at no additional charge. It also features:

- Automatic loop scheduling
- Fill-in charts for alarms and ramp/soak profiles
- **DirectSOFT** programming software includes the loop tune screen with trending
- Auto-tune feature to allow the CPU to determine the near-optimum loop settings (based upon the time constant of your process at the time auto-tune procedure is performed)



Industrial DIN-rail mount premium telephone modem (MDM-TEL)



Program, troubleshoot, or collect data over the telephone line via our industrial modem

4 RTU system when combined with our industrial modem

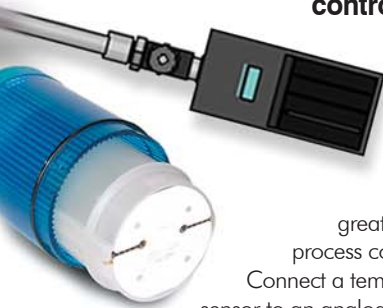
Combine a DL05 AC- or DC-powered unit with our industrial telephone modem and avoid the high cost of an advanced Remote Telemetry System (RTU) that probably has a PLC as its brain anyway. With its configurable Port 2 timing settings, the DL05 easily accommodates our industrial telephone modem for almost any remote dial-up application, such as pump stations, level control and monitoring, even golf course irrigation. This combination can really save you money on service calls, data acquisition, up-and-down-time trending and more.

5 Analog option modules

These little analog modules are the smallest and lowest priced in the industry. We have seven models to choose from, with flexible features including 4-20 mA or 0-20 mA, and 0-5V or 0-10V input and output ranges along with modules accepting temperature input.



6 Low-cost process control system



The small size and flexible features of the DL05 make it a great low-cost process controller.

Connect a temperature sensor to an analog input through an option module. Then, allow the DL05 discrete outputs to control process loads like heater elements and/or mixers using "time-proportioning" and the built-in PID.

- PLC Overview
- DL05/06 PLC**
- DL105 PLC
- DL205 PLC
- DL305 PLC
- DL405 PLC
- Field I/O
- Software
- C-more HMIs
- Other HMI
- AC Drives
- Motors
- Steppers/Servos
- Motor Controls
- Proximity Sensors
- Photo Sensors
- Limit Switches
- Encoders
- Pushbuttons/Lights
- Process
- Relays/Timers
- Comm.
- TB's & Wiring
- Power
- Enclosures
- Appendix
- Part Index