

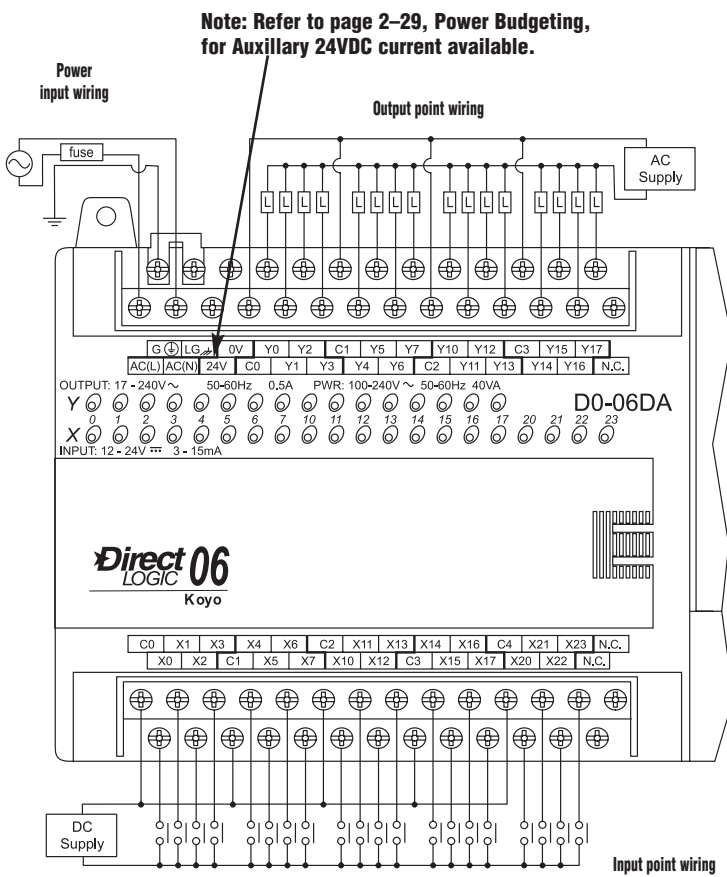
DL06 I/O Specifications

D0-06DA

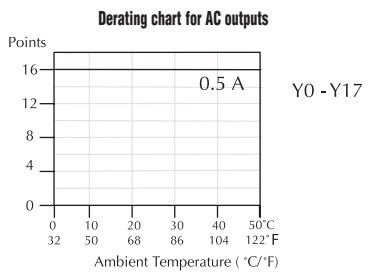
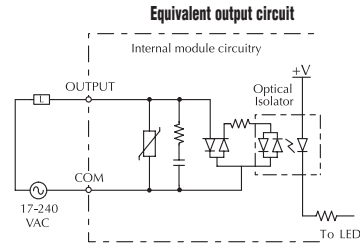
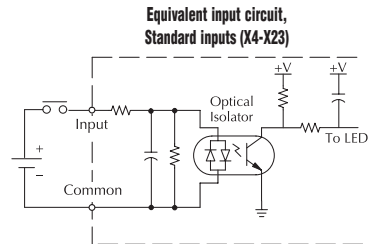
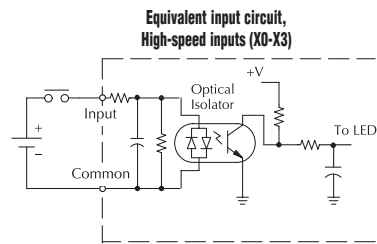


Wiring diagram and specifications

D0-06DA Specifications			
AC Power Supply Specifications	Voltage Range	100-240VAC (40VA)	
	Number of Input Pts.	20 (sink/source)	
	Number of Commons	5 (isolated)	
	Input Voltage Range	10.8-26.4VDC	
	Input Impedance	(X0-X3) 1.8K @ 12-24VDC	
		(X4-X23) 2.8K @ 12-24VDC	
	DC Input Specifications	On Current/Voltage Level	>5mA/10VDC
		OFF Current/Voltage Level	<0.5mA/<2VDC
		Response Time	X0-X3 X4-X23
		OFF to ON Response	<70µs 2-8ms
ON to OFF Response		<70µs 2-8ms	
Fuses		None	
AC Output Specifications		Number of Output Points	16
		Number of Commons	4 (isolated)
		Operating Voltage Range	17-240VAC 47-63Hz
		Peak Voltage	264VAC
	ON Voltage Drop	1.5VAC >50mA 4.0VAC <50mA	
	Maximum Current	0.5A / point; 1.5A / common	
	Maximum Leakage Current	4mA @ 264VAC, 60 Hz	
	Maximum Inrush Current	10A for 10ms	
	Minimum Load	10mA	
	OFF to ON Response	1ms	
	ON to OFF Response	1ms + 1/2 cycle	
	Fuses	None (external recommended)	



Note: Refer to page 2-29, Power Budgeting, for Auxiliary 24VDC current available.



- PLC Overview
- DL05/06 PLC**
- DL105 PLC
- DL205 PLC
- DL305 PLC
- DL405 PLC
- Field I/O
- Software
- C-more HMI
- Other HMI
- AC Drives
- Motors
- Steppers/Servos
- Motor Controls
- Proximity Sensors
- Photo Sensors
- Limit Switches
- Encoders
- Pushbuttons/Lights
- Process
- Relays/Timers
- Comm.
- TB's & Wiring
- Power
- Enclosures
- Appendix
- Part Index