

# DL205 - Great Fit For Applications That Need Simple Stepper or Servo Control

## Here's why

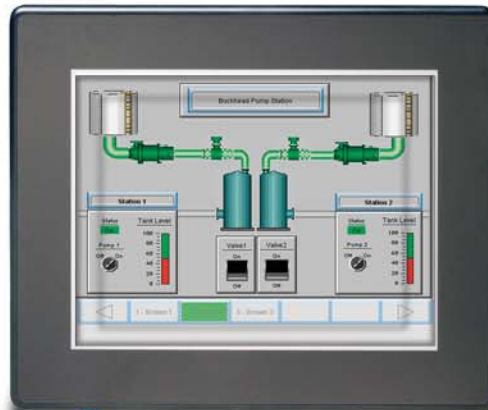
There are many process applications that require accurate motion control at a fast pace, without expecting exact precision and blazing speed. The DL205 PLC, with the counter/pulse output modules' high speed counting capability and high frequency pulse output (H2-CTRIO), offers a viable stepper and servo control solution for open-loop motion control.

## Here's how

When coupled with our **SureServo** or **SureStep** motion products, the resulting system is extremely cost-effective.

A DL205-based motion control system is very well suited to applications such as:

- cut-to-length
- indexing tables or conveyors
- x/y tables (plotter/cutter)



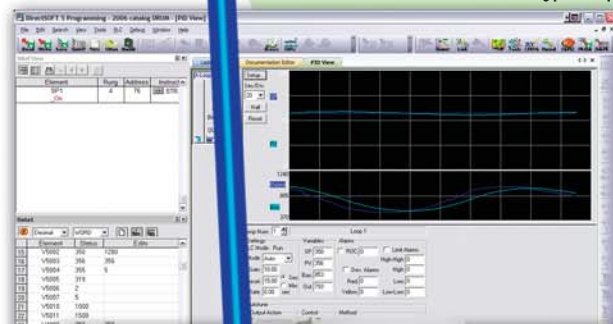
G-more Touch panel



AutomationDirect DL205 PLC with H2-CTRIO module using pulse output feature

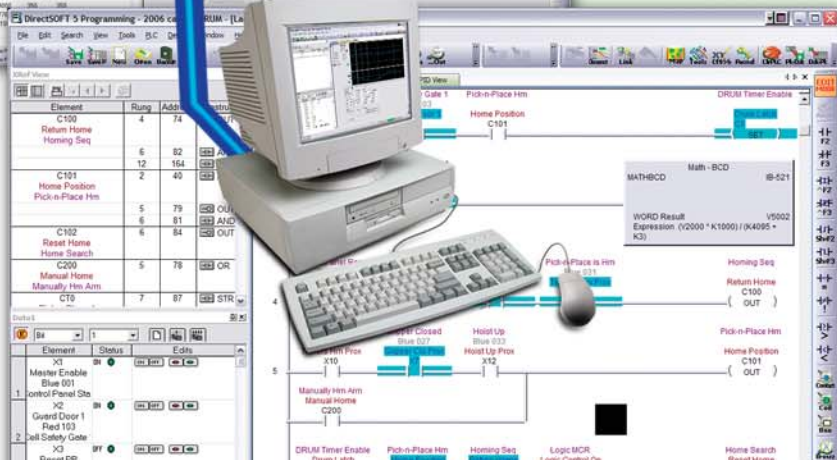


Pulse output from AutomationDirect H2-CTRIO module



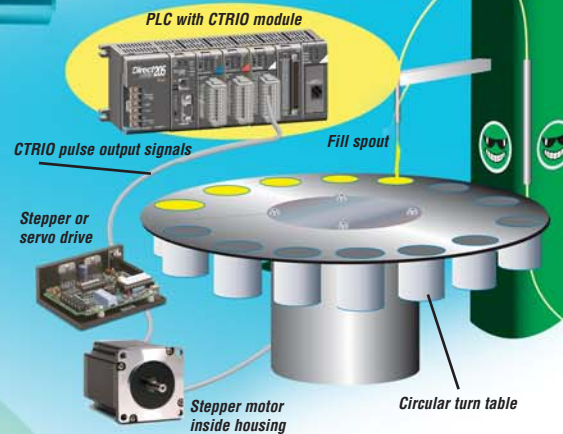
AutomationDirect DirectSOFT PLC programming software screens

**DirectSOFT5**  
(see section 8 of this catalog)



www.sureservo.com

**Rotary indexing liquid fill application**



(see section 15 of this catalog)



The SureServo family of brushless servo systems from AUTOMATIONDIRECT is fully digital and offers a rich set of features at dynamite prices. Choose from **eight standard servo motors** that can be **used in combination with one of three standard servo drives**.

These servos are designed for flexibility and quick implementation. SureServo drives accept a wide range of command sources:

- Built-in motion controller with preset position, velocity or torque
- Select presets with switch inputs and/or the multi-drop Modbus serial interface
- Position commands with "pulse and direction" or "count up and down" format
- Encoder follower
- Analog voltage Velocity or Torque command
- Eight standard systems from 100 W to 3 kW
- Use with DirectLOGIC PLCs or any other host control
- Drives feature on-board indexer and adaptive tuning modes
- Free set-up software
- 30-day money-back guarantee
- 2 year warranty

For configuration, tuning and diagnostics, use the drive's integrated keypad/display or take advantage of the free SureServo Pro™ PC-based software. Tune the system easily with adaptive

auto-tuning selections or manual mode. Adapt to diverse applications with configurable I/O, including 8 digital inputs, 5 digital outputs, 2 analog monitors and a scalable encoder output.



(see section 15 of this catalog)



**Ease of use out of the box!**

The SureStep stepping family has four standard motors to handle a wide range of automation applications such as woodworking, assembly, and test machines. Our square frame or high torque style stepping motors are the latest technology, resulting in the best torque to volume. We have **NEMA 17, 23, and 34 mounting**

**flanges and holding torque ranges from 83 oz-in to 434 oz-in.** A 20-foot extension cable with locking connector is a standard accessory to interface any of the four stepping motors to the microstepping drive, and can be easily cut to length if desired.