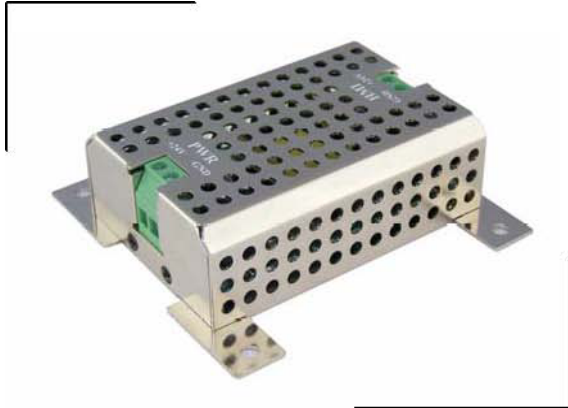


RZPI0010W/20W/30W

DC-DC SINGLE OUTPUT SWITCHING ISOLATED POWER SUPPLY



Features :

- ◆ Isolated
- ◆ Wide Input Range 18 ~ 36 VDC
- ◆ Low Ripple & Noise
- ◆ High Efficiency & Vibration Consideration
- ◆ Over-Voltage, Low Voltage, Short Circuit, Over- Temperature Protections

PRODUCT SPECIFICATIONS :

Model	RZPI0010W	RZPI0020W	RZPI0030W
Operating Temp.	0 to 70 ambient		
Storage Temperature	0 to 85 .		
Enclosure	90.4(L) x 85(W) x26.6(H)mm		
Weight	110g	110g	120g
Input Voltage	18 ~ 36VDC, DC input		
Input Current	440mA at 24VDC	1.1A at 24VDC	1.625A at 24VDC
Output Voltage	24VDC +/- 1%		
Output Current	420mA Max,0A Min	840mA Max,0A Min	1.25A Max,0A Min
Overshoot	Turn-on & off overshoot < 1% over nominal voltage		
Efficiency	75% minimum measuring @ 24Vdc and full load.	80% minimum measuring @ 24Vdc and full load.	77% minimum measuring @ 24Vdc and full load.
Turn On Delay	90m second maximum at 18Vdc.	90m second maximum at 18Vdc.	90m second maximum at 18Vdc.
Ripple & Noise	+/- 1% Vout		
Input Fusing Protection	One 1A/250V fuse inserted in primary.	One 1A/250V fuse inserted in primary.	One 1.6A/250V fuse inserted in primary.
Over Temperature Protection	Over 130 to suspend , to go back to 110 Auto-recovery		
Over Voltage Protection	Over Voltage to suspend and Auto-recovery.		
Short Circuit Protection	Trip without damage and auto-recovery.		
Applicable HMI Model	MT505/MT506 MT606 MT8056	MT508 / 510 MT608 / 610 / 612 MT8080 / 8104 / 8121	MT612X/615X MT8121X/8150X
MT610X / MT8104X / MT6070T / MT8070T Build-in			

